



15 APPLEWOOD HOUSE ORCHARD COURT

Bury, BL9 9JS

Offers In The Region Of £160,000

# 15 APPLEWOOD HOUSE ORCHARD COURT

## Property at a glance

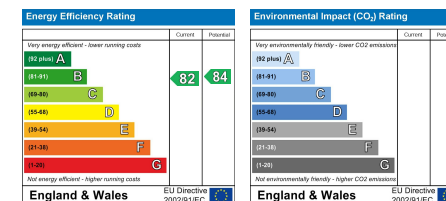
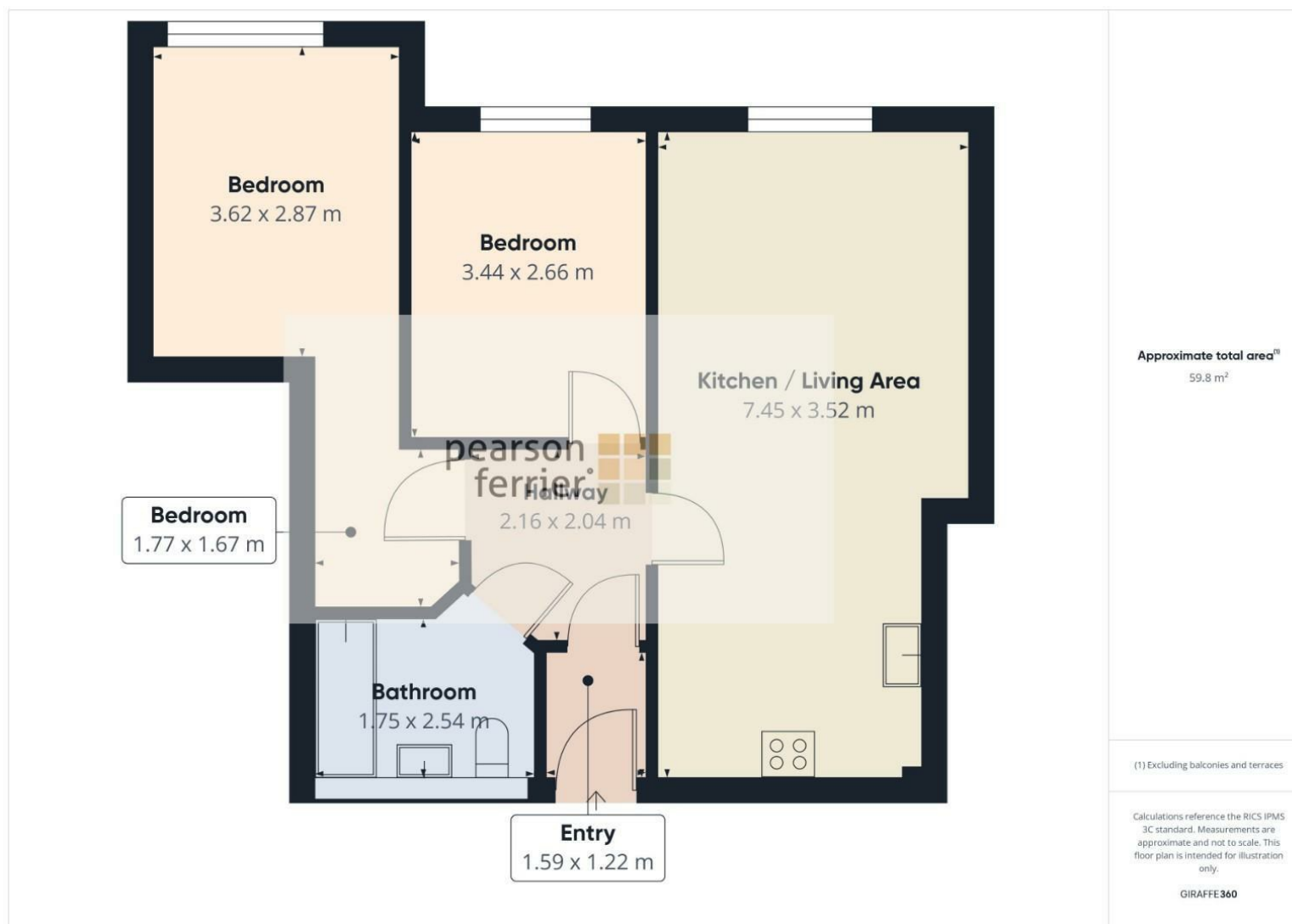
- SECURE GATED DEVELOPMENT
- TWO DOUBLE BEDROOMS
- FIRST FLOOR
- ALLOCATED PARKING AND COMMUNAL GARDENS
- NO ONWARD CHAIN
- EXCELLENT TRANSPORT LINKS

An immaculately presented two bedroom first floor apartment in an attractive position set back from Manchester Road in Bury, on a development known as Orchard Court. The complex is protected by remotely operated entrance gates and there are well maintained and matured communal gardens. The apartment is being offered for sale with no onward chain and the accommodation comprises: communal entrance hall with stairs to the first floor landing, apartment entrance vestibule, inner hall, Open plan lounge/kitchen/diner two double bedrooms and family bathroom there is also secure designated parking. The property is an ideal first time buy and for downsizers alike.

Tenure - Leasehold for the residue of 999 Years (978 years remaining)  
Management charge £115 per month.  
Council Tax Banding - B  
Epc Rating - B







Bury Office  
435/7 Walmersley Road, Bury, Lancashire, BL9 5EU  
Telephone: 0161 764 4440  
Fax: #  
Email: bury@pearsonferrier.co.uk

[www.pearsonferrier.co.uk](http://www.pearsonferrier.co.uk)



All statements contained in these particulars are for indicative purposes only and are made without responsibility on the part of Pearson Ferrier and the vendors of this property and are not to be relied on as statements or representations of fact. Potential purchasers should satisfy themselves by inspection or otherwise as to the accuracy of such details contained in these particulars.